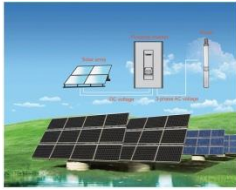


AC Drive | Solar Pumping System Solar power System | Solar panel



Contact:
Global Wedge, Inc.
3267 Larkspur St, Tustin, CA 92782, USA
Tel: +1(951) 413-1482
Email: solar@globalwedge.com



Jaton Technology Limited

www.jatontec.com

2013/3/1

Introduction

Jaton Technology Limited, established in 2006, is committed to be the globally leading and respected provider for products and services of industrial automation and electric power. Jaton is a national-level high-tech company, whose business involves AC drive, Solar Pumping System, Solar Power System and etc.

Jaton will continue to spare no efforts in reinforcing its position as a product, technology and market leader and leveraging its efficient management, high profitability and other clear competitive advantages as a leading brand to become a standard bearer for national industry. We always contribute our efforts to help our customers improve production efficiency, save energy consumption and fulfill its social responsibilities.

Certificates



Solar pumping system

PV Pumping System Introduction:

Jaton Technology Limited. specialized in R & D, manufacture, sales and service of Solar Pump Controller and complete system solutions as well.

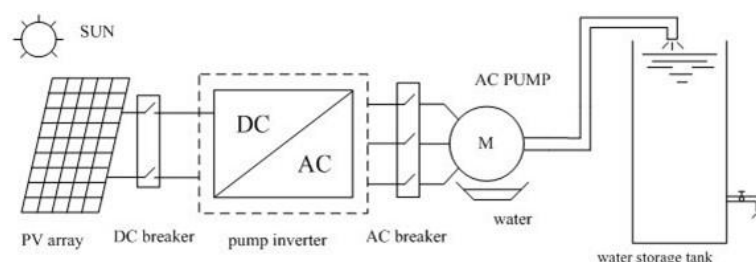
The PV Pumping System consists of Solar panel, Solar Pump Controller, AC Pump(3-phase) and Storage Device. The Pump is driven by electricity which is generated from PV Panel. The mains will be used as option when PV panel fails.

It can be applied for domestic water (ground water), agricultural irrigation, forestry irrigation, desert control, pasture animal husbandry, town and city water supply, wastewater treatment engineering, municipal engineering, city center squares, parks, tourist sites, resorts and hotels, the landscapes and fountain systems etc..

The PV Pumping system ,fulfills concept of the low carbon, energy conservation, environmental protection concept, to improve the living standard in Water-deficient area.

Application

- Desert water supply;
- Village and town water supply;
- Apartment, hotel and hospital sewage treatment;
- Aeration machine, cooling tower and other industrial usage;
- Scenic spot fountains;
- Agricultural and forestry irrigation.



Deep well pump system

Application:

Apply to domestic water, agricultural and forestry irrigation, landscape water supply, long distance water supply, industrial water etc..

Source of water:

Deep well, clean water.

Running conditions of Pump:

- Without solid particles or fiber thin clean non corrosive liquid in the source of water;
- Liquid temperature: the highest is 35 °C ;
- The PH range of water: 6.5-8.5;
- The depth range of pump driving: 15-70 meter;

System Feature:

- Automatic/manual operation mode;
- Different remote communication function which can monitor and control the operation state remotely;
- IP65 for outdoor and suitable to different application environment, low installation cost;
- Wide operating environment temperature range and max. environment temperature can be 60 °C ;
- Complete system protection mechanism, lengthen the system lifespan, such as automatic dry protection of pump short-circuit and phase lose etc.;
- Matching all kinds of solar panels with high configuration redundancy;
- Providing different solutions according to different customer requirements, such as anti-theft, GPS remote communication and compatible with the mains input;
- High standards of quality management, the lifespan of system for 15-20 years;

- The system head can be more than 200 meters.

Technical Parameter:

System model	Recommend maximum PV modules output power (KW)	PV Pump inverter model	Deep well pump				
			Motor rated power (KW)	Motor rated voltage (V)	Motor rated frequency (Hz)	Head (m)	Flow (m ³ /day @ 5.5 hours)
P1K1L-SJ	1.54	EHE-P1K1L	1.1	220-240 3-phase	0-50/60	7.5-129	150-5
P1K5L-SJ	2.1	EHE-P1K5L	1.5	220-240 3-phase	0-50/60	25-186	60-5
P2K2L-SJ	3.08	EHE-P2K2L	2.2	220-240 3-phase	0-50/60	6-260	300-5
P3K7L-SJ	5.18	EHE-P3K7L	3.7	220-240 3-phase	0-50/60	71-172	40-20
P4KL-SJ	5.6	EHE-P4KL	4	220-240 3-phase	0-50/60	9.5-161	475-25
P4KH-SJ	5.6	EHE-P4KH	4	380-400 3-phase	0-50/60	9.5-161	475-25
P5K5H-SJ	7.7	EHE-P5K5H	5.5	380-400 3-phase	0-50/60	20-147	300-40
P7K5H-SJ	10.5	EHE-P7K5H	7.5	380-400 3-phase	0-50/60	25-198	375-40
P11KH-SJ	15.4	EHE-P11KH	11	380-400 3-phase	0-50/60	19-145	600-85
P15KH-SJ	21	EHE-P15KH	15	380-400 3-phase	0-50/60	27.5-189	600-85
P18K5H-SJ	25.9	EHE-P18K5H	18.5	380-400 3-phase	0-50/60	28.5-155	750-150
P22KH-SJ	30.8	EHE-P22KH	22	380-400 3-phase	0-50/60	36-184	750-150
P30KH-SJ	42	EHE-P30KH	30	380-400 3-phase	0-50/60	49.5-179	750-210
P37KH-SJ	51.8	EHE-P37KH	37	380-400 3-phase	0-50/60	56.5-197	750-210
P45KH-SJ	63	EHE-P45KH	45	380-400 3-phase	0-50/60	73-162	750-375

Surface pump system

Application:

Apply to domestic water, agricultural and forestry irrigation, landscape water supply, long distance water supply, industrial water etc..

Source of water:

River, lake and pond etc..

Running conditions of Pump:

- The volume content of solid insolubles shall be not more than 0.1% per unit volume; The particle size is not more than 0.2mm;
- The environment temperature shall not exceed 40°C ;
- The relative humidity shall not be less than 98°C.

System Feature:

- Automatic/manual mode;
- Different remote communication function which can monitor and control the operation state remotely;
- Wide operating environment temperature range and max. environment temperature can be 60°C ;
- Complete system protection mechanism, lengthen the system lifespan, such as automatic dry, protection of pump short-circuit and phase lose etc.;
- Match all kinds of solar panels with high configuration redundancy;
- Providing different solutions according to different customer requirements, such as anti-thief, GPS remote communication and compatible with the mains input;
- High standards of quality management, the lifespan of system for 15-20 years.

Technical Parameter:

System model	Recommended maximum PV modules output power (KW)	PV Pump inverter model	Deep well pump				
			Motor rated power (KW)	Motor rated voltage(V)	Motor rated frequency (Hz)	Head (m)	Flow (m ³ /day)
P1K1L-DB	1.54	EHE-P1K1L	1.1	220-240 3-phase	0-50/60	7-15	75-35
P1K5L-DB	2.1	EHE-P1K5L	1.5	220-240 3-phase	0-50/60	7-20	125-50
P2K2L-DB	3.08	EHE-P2K2L	2.2	220-240 3-phase	0-50/60	7-26	250-45
P3K7L-DB	5.18	EHE-P3K7L	3.7	220-240 3-phase	0-50/60	8-34	400-60
P4KL-DB	5.6	EHE-P4KL	4	220-240 3-phase	0-50/60	6-40	500-60
P4KH-DB	5.6	EHE-P4KH	4	380-400 3-phase	0-50/60	6-40	500-60
P5K5H-DB	7.7	EHE-P5K5H	5.5	380-400 3-phase	0-50/60	7-50	500-60
P7K5H-DB	10.5	EHE-P7K5H	7.5	380-400 3-phase	0-50/60	9-40	725-100
P11KH-DB	15.4	EHE-P11KH	11	380-400 3-phase	0-50/60	7-25	1500-400
P15KH-DB	21	EHE-P15KH	15	380-400 3-phase	0-50/60	8-30	1500-400
P18K5H-DB	25.9	EHE-P18K5H	18.5	380-400 3-phase	0-50/60	9-35	1500-400
P22KH-DB	30.8	EHE-P22KH	22	380-400 3-phase	0-50/60	10-25	2000-900
P30KH-DB	42	EHE-P30KH	30	380-400 3-phase	0-50/60	13-25	3000-1000
P37KH-DB	51.8	EHE-P37KH	37	380-400 3-phase	0-50/60	8-35	4000-750
P45KH-DB	63	EHE-P45KH	45	380-400 3-phase	0-50/60	7-40	7500-900

Solar Pump Inverter

■ L series (220v 3phase)

1.1KW/1.5KW/2.2KW/3KW/3.7KW/4KW

Product Feature:

- To drive pumps equipped with 3-phase induction motors;
- Adopt advanced IGBT power module;
- High conversion efficiency, low temperature rise, low noise, long lifespan;
- Advanced MPPT technology, efficiency >99.9%;
- Fully automatic operation, it can store operation data for 10 years;
- Perfect system protection, high reliability;
- New design of anodized aluminum case;
- LCD display;
- Interface: RS485/WiFi;
- Modular design, easy to install, operate, maintain.



Technical Parameter:

Item/ Type	EHE-P1K1L
DC input	
Max. input DC voltage	450Vdc
Recommended MPPT voltage	170~350Vdc
Max. input DC current	8A
Max. MPPT efficiency	99%
Number of strings	1
AC output	
Max. applicable motor output power	1.1kW
Rated output voltage	220~240Vac 3-phase
Output frequency range	0~50/60 Hz
Rated output current	5A
Mechanical data	
Dimension(W/H/D)	330/450/152(mm)
Weight	12kg
System	
Max. efficiency	97%
Protection class	I
Protection degree	IP65
Environment temperature	-25~+65℃
Cooling	Natural cooling
Display	LCD
Communication interface	RS485/WiFi
Altitude	3000m; above 3000m need derate operating
Noise emission	<50dB
Meet the standards	EN 50178; IEC/EN 62109-1; IEC 61800

■ H series (380v 3phase)

2.2KW/3KW/3.7KW/4KW/5.5KW/7.5KW/11KW/15KW/18KW/22KW/30KW/37KW/45KW/55KW/75KW/90KW/100KW

Product Feature:

- To drive pumps equipped with 3-phase induction motors;
- Adopt advanced IGBT power module;
- High conversion efficiency, low temperature rise, low noise, long lifespan;
- Advanced MPPT technology, efficiency >99.9%;

- Fully automatic operation, it can store operation data for 10 years;
- Perfect system protection, high reliability;
- New design of anodized aluminum case;
- LCD display;
- Interface: RS485/WiFi;
- Modular design, easy to install, operate, maintain.

Technical Parameter:

Item/ Type	EHE-P2K2H
DC input	
Max. input DC voltage	880Vdc
Recommended MPPT voltage	460~850Vdc
Max. input DC current	5A
Max. MPPT efficiency	99%
Number of strings	2
AC output	
Max. applicable motor output power	2.2kW
Rated output voltage	380~460Vac 3-phase
Output frequency range	0~50/60 Hz
Rated output current	6A
Mechanical data	
Dimension(W/H/D)	265/430/166(mm)
Weight	7.5kg
System	
Max. efficiency	98%
Protection class	I
Protection degree	IP65
Environment temperature	-25~+65℃
Cooling	Natural cooling
Display	LCD
Communication interface	RS485/WiFi
Altitude	3000m; above 3000m need derate operating
Noise emission	<50dB
Meet the standards	EN 50178; IEC/EN 621091; IEC 61800

Applications



Contact:
Global Wedge, Inc.
3267 Larkspur St, Tustin
CA 92782, USA
Tel: +1(951) 413-1482
Email: solar@globalwedge.com